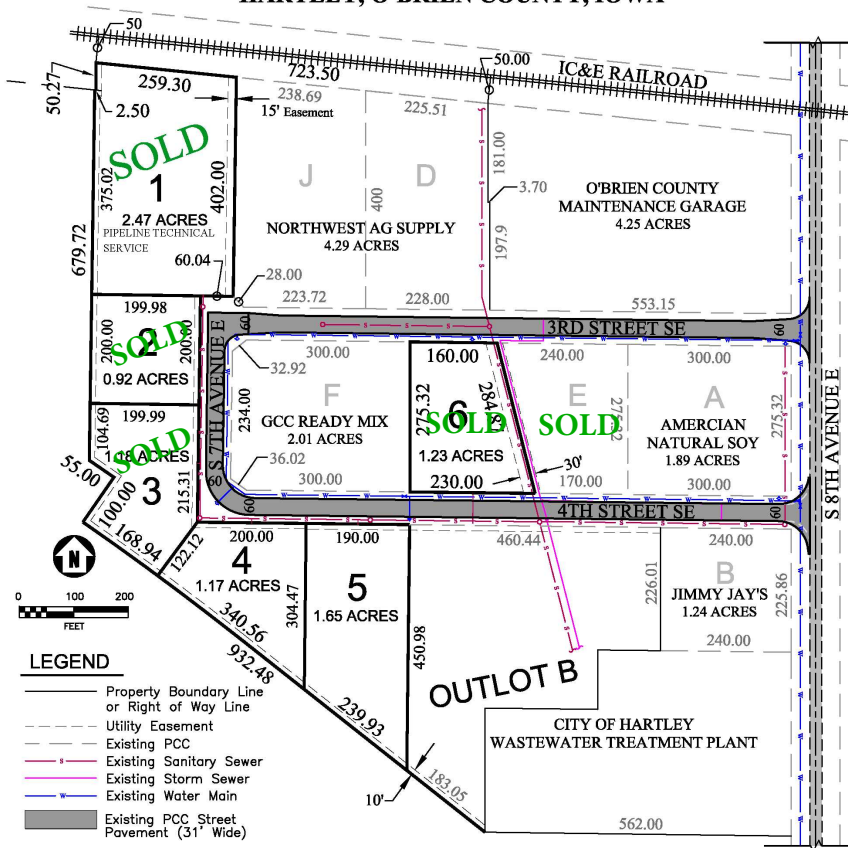


# HARTLEY INDUSTRIAL PARK

## HARTLEY, O'BRIEN COUNTY, IOWA



### HARTLEY INDUSTRIAL PARK SUMMARY

6 LOTS - 8.6 ACRES  
 ZONED HEAVY INDUSTRIAL  
 WWTP CAPACITY: 0.24 MGD  
 WATER TREATMENT CAPACITY: 0.61 MGD  
 ELECTRICAL SERVICE: 5 MW  
 NATURAL GAS: 2 Inch Main, 60 PSI  
 FIBER OPTIC COMMUNICATIONS:  
 DIGITAL, HD CABLE TELEVISION;  
 PHONE & HIGH SPEED INTERNET  
 RAILROAD SERVICE: IOWA, CHICAGO  
 & EASTERN  
 MUNICIPAL AIRPORT: 2500FT ACC RUNWAY

PREPARED BY:  
 KRUSE, CATE & NELSON, P.C.  
 SPENCER, IOWA  
 AUGUST 15, 2008  
 DRAWING NO. 1814-X4